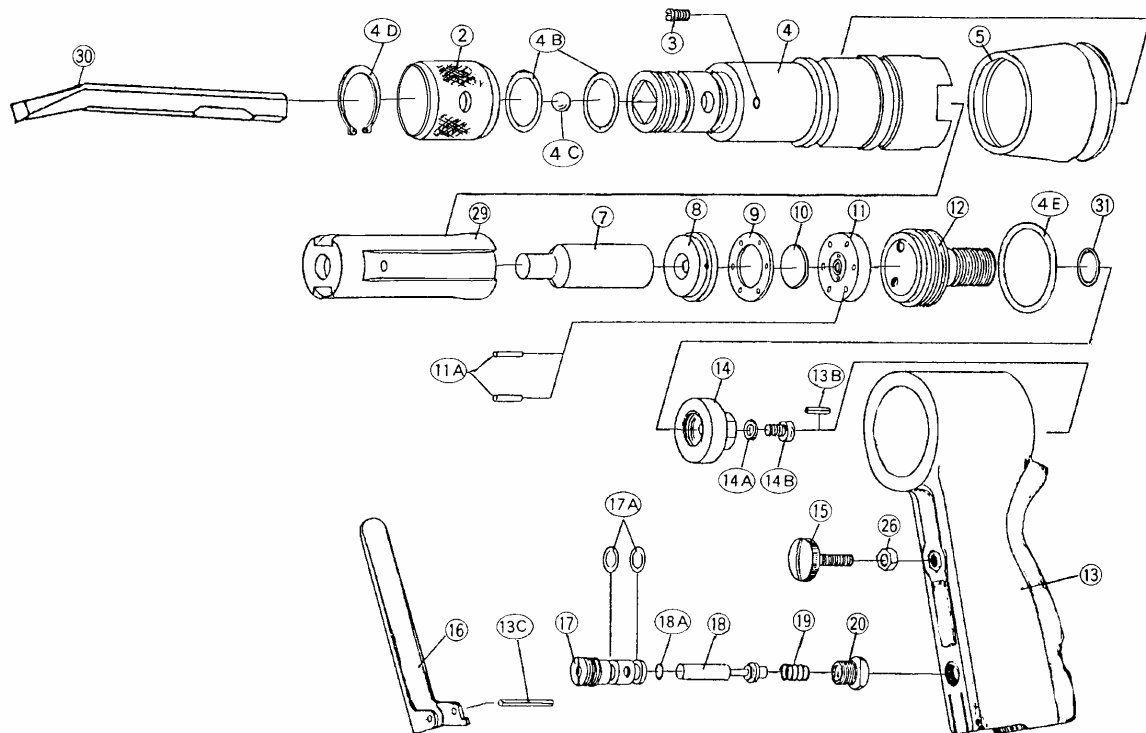
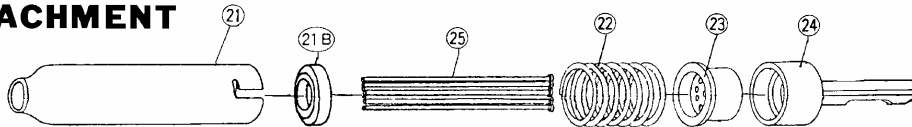


## EXPLODED VIEW



## NEEDLE ATTACHMENT



## PARTS LIST

16/05/2001

◆Parts may be changed with or without notice for improvement.

PARTS No.	NAME OF PARTS	PER SET	PARTS CODE	ORDER	PARTS No.	NAME OF PARTS	PER SET	PARTS CODE	ORDER
2	Chisel Cover	1	PF20-J90		16	Throttle Lever	1	F25C-270	
3	Notch Pin	1	PF20-340		17	Throttle Bushing	1	PF20-420	
4	Cylinder Body	1	PF20-H50		17A	O-Ring	2	000700PR	
4A	Cylinder Body Assy. (No. 4, No. 29)					18	Throttle Pin	1	PF20-280
4B	O-Ring	2	00220APR		18A	O-Ring	1	000400PR	
4C	Steel Ball	1	008030SB		19	Throttle Spring	1	PF20-230	
4D	Snap Ring	1	002800ST		20	Throttle Cap	1	PF20-J10	
4E	O-Ring	1	003500PR		26	Hex. U-Nut	1	00600UMN	
5	Protect Cover	1	PF20-070		29	Piston Sleeve	1	PF20-L00	
7	Piston	1	PF20-400		30	Chisel	1	----	
8	Lower Main Valve	1	F25C-L32		31	O-Ring	1	001250PR	
9	Main Valve Case	1	F25C-L40						
10	Main Valve	1	F25C-L30						
10A	Main Valve Assy. (No. 8~No. 11A)								
11	Upper Main Valve	1	F25C-L31						
11A	Pin	2	F25C-410			<b>NEEDLE ATTACHMENT (for F4)</b>			
12	Lock Screw	1	PF20-H40			Needle Attachment Assy. (No. 21~No. 25)			
13	Handle Case	1	PF20-K80		21	Needle Cover	1	PF20NK40	
13A	Handle Case Assy. (No. 13, 13C, 15~26)					21A	Needle Cover Assy. (No. 21, No. 21B)		
13B	Spring Pin	1	030060SP		21B	Spring Receiver	1	PF20N240	
13C	Spring Pin	1	030280SP		22	Spring	1	PF20N230	
14	Setting Nut	1	PF20-330		23	Needle Guide (3mm)	1	PF20NK30	
14A	Spring Washer	1	006000SW		23	Needle Guide (2mm, OP)	(1)	PF20NK31	
14B	Hex. Cap Bolt	1	006120CB		24	Needle Shank	1	PF20NL10	
15	Air Adjust Screw	1	PF20-210		25	Needle (3mm)	13	F25CNK20	
					25	Needle (2mm, OP)	(23)	F25CNK19	