

KPT-1100 SAW/FILE KIT

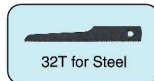
with saw blade, 3 files & ex. hose



Cutting Cap	1.5 mm
Piston Stroke	9.0 mm
Free Speed	5,000 rpm
Air Consumption	5.39 l/s
Dimensions	278 x 36 x 38 mm
Net Weight	0.9 kg
Air Inlet	1/4"

KPT-720 SAW

with saw blades



Cutting Cap	1.5 mm
Piston Stroke	8.7 mm
Free Speed	11,000 rpm
Air Consumption	5.39 l/s
Dimensions	250 x 40 x 37 mm
Net Weight	0.5 kg
Air Inlet	1/4"

KPT-1150 MINI SAW

with saw blade
mini



Cutting Cap	1 mm
Piston Stroke	5 mm
Free Speed	3,400 rpm
Air Consumption	5.39 l/s
Dimensions	222 x 30 x 30 mm
Net Weight	0.45 kg
Air Inlet	1/4"

KPT-52 HAMMER

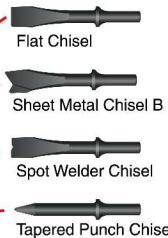
KPT-52K HAMMER KIT KPT-52H HAMMER (HEX. TYPE)



Shank Opening	10.2 mm
Piston Dia.	19 mm
Piston Stroke	55 mm
Blows/min.	3,000 bpm
Dimension	216 x 50 x 157 mm
Air Consumption	6.74 l/s
Net Weight	1.65 kg
Air Inlet	1/4"



KPT-52K Weight.....2.6 kg



KPT-52H HAMMER
HEXAGONAL TYPE

KPT-S2 SCALING HAMMER



Piston Dia.	30 x 24 x 80 mm
Piston Stroke	25 mm
Blows/min.	8,000 bpm
Air Consumption	5.0 l/s
Dimensions	480 x 48 x 115 mm
Net Weight	2.3 kg
Air Inlet	3/8"

KPT-J5 • KPT-J10 • KPT-J15 JUMBO SCRAPERS



	KPT-J5	KPT-J10	KPT-J15
Piston Dia.	25 mm	25 mm	25 mm
Piston Stroke	22 mm	22 mm	22 mm
Blows/min.	4,000 bpm	4,000 bpm	4,000 bpm
Air Consumption	6.67 l/s	6.67 l/s	6.67 l/s
Dimensions	750 x 45 x 45 mm	1,000 x 45 x 45 mm	1,500 x 45 x 45 mm
Net Weight	3.0 kg	3.7 kg	5.2 kg
Air Inlet	3/8"	3/8"	3/8"

KPT-516H HEAVY DUTY RIVETER KPT-516HS HEAVY DUTY AUTOMATIC RIVETER

KPT-516HS



KPT-516H / 516HS		
Capacity	Rivet	2.4, 3.2, 4.0, 4.8, 6.4 mm
	Mandrel	3/32, 1/8, 5/32, 3/16, 3/16"
		6.4 mm except stainless steel
Piston Stroke	1	18 mm
Air Consumption		0.4 lit. / rivet
Dimensions		260 x 89 x 320 mm
Net Weight		2.1 / 2.4 kg
Air Inlet		3/8"

KPT-516H

KPT-517H HEAVY DUTY RIVETER KPT-517HS HEAVY DUTY AUTOMATIC RIVETER

KPT-517H



KPT-517H / 517HS		
Capacity	Rivet	2.4, 3.2, 4.0, 4.8 mm
	Mandrel	3/32, 1/8, 5/32, 3/16"
Piston Stroke		15 mm
Air Consumption		0.26 lit. / rivet
Dimensions		229 x 78 x 270 mm
Net Weight		1.5 / 1.7 kg
Air Inlet		3/8"

KPT-517HS