



PHOTO : MODEL NO.UD-50-45 1993
STILL USED AT USERS

DRILLS & TAPPERS

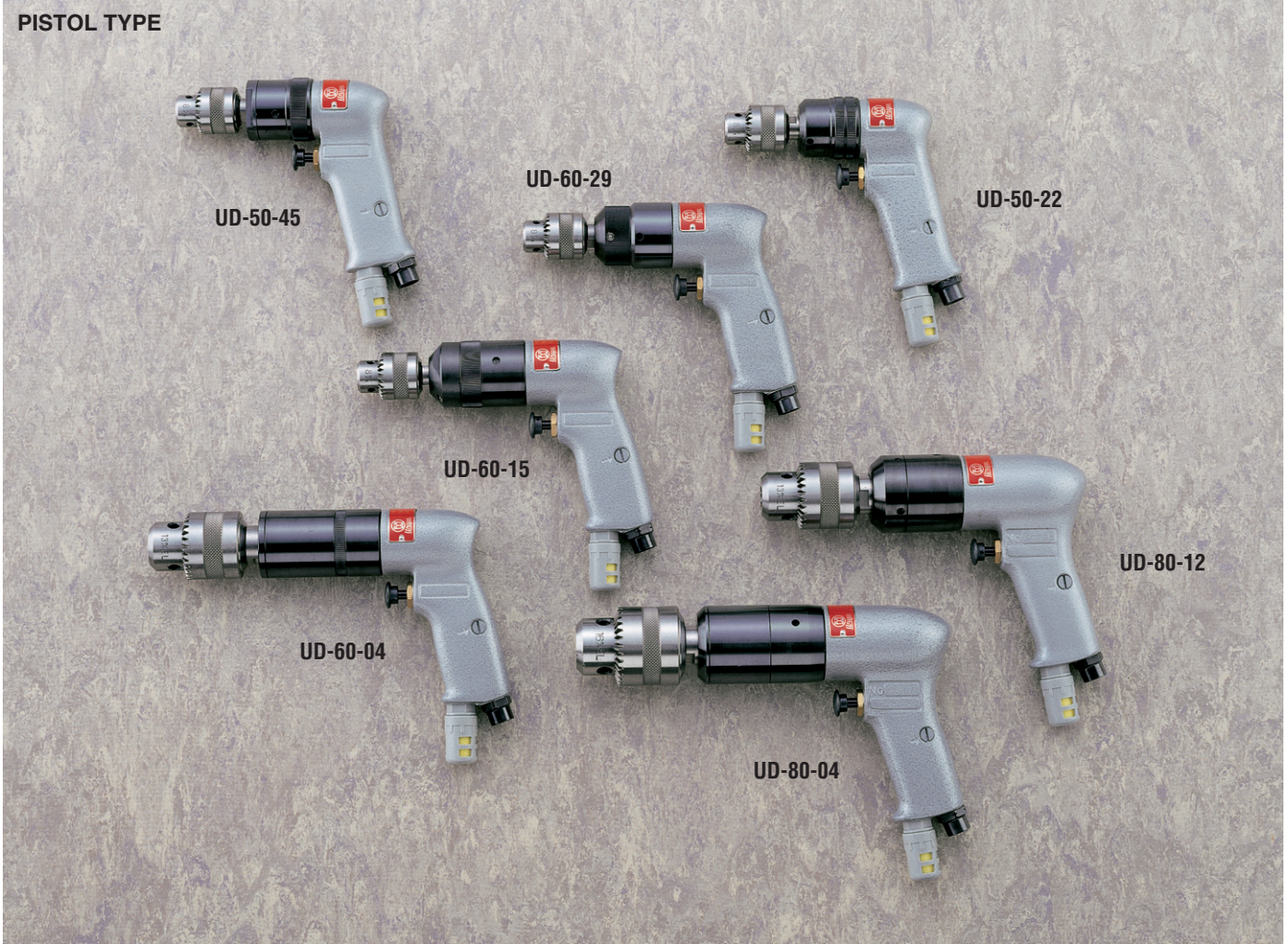
COMBINATION DRILLS
TAPPERS

* Sound Level measured to ISO 15744
* Vibration Level measured to ISO 8662

UD-50/60/80 SERIES DRILLS

With interchangeable Gear Boxes these **UD-series** Drills offer a wide range of speeds for various applications. Rear exhaust through silencer results in extremely low noise.

PISTOL TYPE



Power is controlled by the built-in Air Regulator located on the handle. (Pistol handle type only)

Dead Handle Assembly (Option)



For UD-60 series 612-896-0
For UD-80 series 613-896-0

SPECIFICATIONS

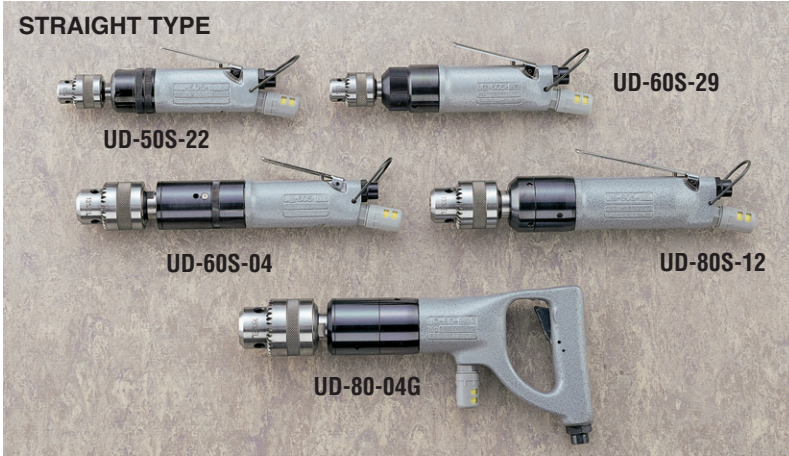
Recommended Air Pressure : 0.6MPa(85psi)

Model	Drilling Capacity		Free Speed (about)	Overall Length (about)		Weight with Chuck (about)		From Center to Outside (about)		Nominal Chuck Size		Type of Spindle	Average Air Consumption		Noise Level	Vibration Level
	mm	in	r.p.m.	mm	in	kg	lb	mm	in	mm	in	in-thr'd	m ³ /min	ft ³ /min	dB(A)	m/sec ²
UD-50-200	3	1/8	23000	135	5 5/16	0.70	1.50	21.0	53/64	8	5/16	3/8-24UNF	0.40	14	73	0.5
UD-50-45	6	1/4	5000	145	5 23/32	0.86	1.89	21.0	53/64	8	5/16	3/8-24UNF	0.40	14	72	0.5
UD-50-22	8	5/16	2200	140	5 1/2	0.90	1.98	21.0	53/64	8	5/16	3/8-24UNF	0.40	14	72	1.0
UD-60-29	8	5/16	2900	167	6 9/16	1.10	2.43	22.5	57/64	8	5/16	3/8-24UNF	0.50	18	77	1.0
UD-60-20	8	5/16	2000	180	7 1/8	1.20	2.64	22.5	57/64	8	5/16	3/8-24UNF	0.50	18	77	1.0
UD-60-15	8	5/16	1600	180	7 1/8	1.20	2.64	22.5	57/64	8	5/16	3/8-24UNF	0.50	18	76	1.0
UD-60-07	13	1/2	700	214	8 27/64	1.40	3.08	22.5	57/64	13	1/2	1/2-20UNF	0.50	18	75	2.0
UD-60-04	13	1/2	500	220	8 5/8	1.40	3.08	22.5	57/64	13	1/2	1/2-20UNF	0.50	18	75	2.0
UD-80-12	13	1/2	1200	212	8 7/16	1.80	3.96	26.0	1 1/64	13	1/2	1/2-20UNF	0.65	23	79	2.0
UD-80-07	13	1/2	700	242	9 1/2	2.30	5.06	26.0	1 1/64	13	1/2	1/2-20UNF	0.65	23	79	2.0
UD-80-04	16	5/8	400	265	10 7/16	2.90	6.39	26.0	1 1/64	16	5/8	5/8-16UNF	0.65	23	79	2.0

*Air Hose Size (Inside Diameter) : 9.5mm (3/8")
*Air Inlet Thread : N.P.T.1/4"

UD-50/60/80 SERIES DRILLS

STRAIGHT TYPE



SPINDLE	3/8"-24 UNF	1/2"-20 UNF	5/8"-16 UNF
Key Chuck	○ 8mm (923-070-0) * 10mm (923-072-0)	○ 13mm (923-071-0) * 10mm (923-073-0)	○ 16mm (927-080-0)
Chuck Handle	(927-051-0)	(927-053-0)	(927-055-0)

○ : Standard * : Option

SPECIFICATIONS

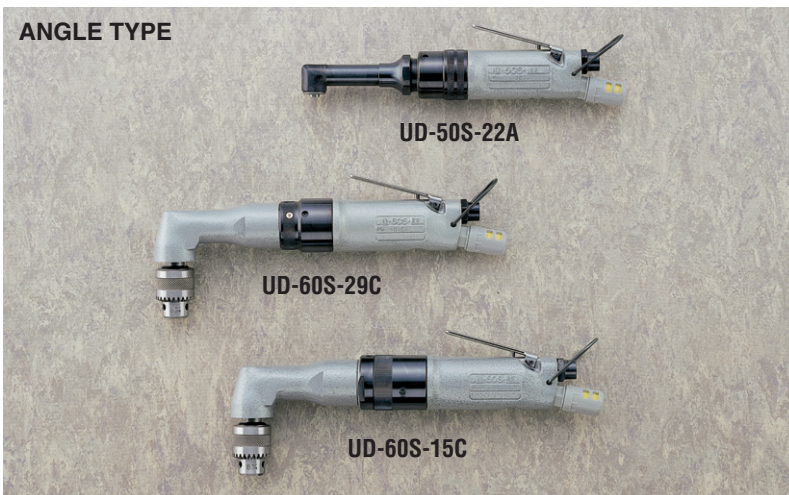
Recommended Air Pressure : 0.6MPa(85psi)

Model	Drilling Capacity		Free Speed (about)	Overall Length (about)		Weight with Chuck (about)		From Center to Outside (about)		Nominal Chuck Size		Type of Spindle	Average Air Consumption		Noise Level	Vibration Level
	mm	in	r.p.m.	mm	in	kg	lb	mm	in	mm	in	in-thr'd	m ³ /min	ft ³ /min	dB(A)	m/sec ²
UD-50S-200	3	1/8	23000	200	7 7/8	0.70	1.50	21.0	53/64	8	5/16	3/8-24UNF	0.40	14	78	1.0
UD-50S-45	6	1/4	5000	210	8 9/32	0.85	1.87	21.0	53/64	8	5/16	3/8-24UNF	0.40	14	77	1.0
UD-50S-22	8	5/16	2200	205	8 1/16	0.83	1.83	21.0	53/64	8	5/16	3/8-24UNF	0.40	14	77	1.5
UD-60S-29	8	5/16	2900	227	8 15/16	1.05	2.32	22.5	57/64	8	5/16	3/8-24UNF	0.50	18	77	1.5
UD-60S-20	8	5/16	2000	238	9 3/8	1.15	2.54	22.5	57/64	8	5/16	3/8-24UNF	0.50	18	77	2.0
UD-60S-15	8	5/16	1600	238	9 3/8	1.15	2.54	22.5	57/64	8	5/16	3/8-24UNF	0.50	18	77	2.5
UD-60S-07	13	1/2	700	272	10 23/32	1.35	2.98	22.5	57/64	8	5/16	1/2-20UNF	0.50	18	75	2.5
UD-60S-04	13	1/2	500	279	10 63/64	1.35	2.98	22.5	57/64	8	5/16	1/2-20UNF	0.50	18	75	2.5
UD-80S-12	13	1/2	1200	280	11 13/64	1.60	3.53	26.0	1 1/64	13	1/2	1/2-20UNF	0.65	23	79	2.5
UD-80S-07	13	1/2	700	300	11 13/16	2.10	4.73	26.0	1 1/64	13	1/2	1/2-20UNF	0.65	23	79	2.5
UD-80S-04	16	5/8	400	323	12 23/32	2.70	5.95	26.0	1 1/64	16	5/8	5/8-16UNF	0.65	23	79	2.5
UD-80-12G	13	1/2	1200	290	11 27/64	2.30	5.06	26.0	1 1/64	13	1/2	1/2-20UNF	0.65	23	79	1.0
UD-80-07G	13	1/2	700	310	12 13/64	2.80	6.16	26.0	1 1/64	13	1/2	1/2-20UNF	0.65	23	79	1.5
UD-80-04G	16	5/8	400	333	13 7/64	3.40	7.50	26.0	1 1/64	16	5/8	5/8-16UNF	0.65	23	79	1.5

*Air Hose Size (Inside Diameter) : 9.5mm (3/8")

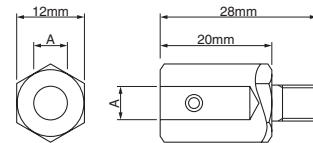
*Air Inlet Thread : N.P.T.1/4"

ANGLE TYPE



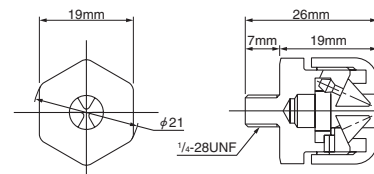
DRILL ADAPTER (for UD-50S Series)

Available sizes : 2mm, 3mm, 4mm, 5mm, 6mm
1/8", 5/32", 1/4"



CONE JAW CHUCK (for UD-50S Series)

Capacity : up to 1/4" or 6.35mm
Code No. : 923-100-0



SPECIFICATIONS

Recommended Air Pressure : 0.6MPa(85psi)

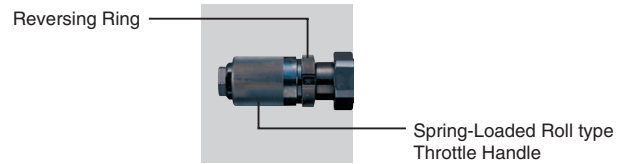
Model	Drilling Capacity		Free Speed (about)	Overall Length (about)		Weight with Chuck (about)		Height with Chuck (about)		From Center to Outside (about)		Nominal Chuck Size	Type of Spindle	Average Air Consumption		Noise Level	Vibration Level	
	mm	in	r.p.m.	mm	in	kg	lb	mm	in	mm	in	mm	in	in-thr'd	m ³ /min	ft ³ /min	dB(A)	m/sec ²
UD-50S-45A	4	5/32	5000	253	9 31/32	0.90	1.98	40	1 57/64	21.0	53/64	-	-	1/4-28UNF	0.40	14	79	2.5
UD-50S-22A	4	5/32	2200	248	9 49/64	0.88	1.94	40	1 57/64	21.0	53/64	-	-	1/4-28UNF	0.40	14	79	2.5
UD-60S-29C	8	5/16	2900	276	10 55/64	1.52	3.34	90	3 35/64	22.5	57/64	8	5/16	3/8-24UNF	0.50	18	79	3.2
UD-60S-15C	8	5/16	1600	283	11 9/64	1.60	3.52	90	3 35/64	22.5	57/64	8	5/16	3/8-24UNF	0.50	18	79	3.2

URD-22 SERIES HEAVY DUTY DRILLS

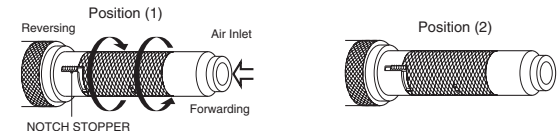
Smooth and accurate operations for many kinds of applications, such as drilling, tapping, reaming and tube rolling, etc.



SELF-RETURNING ROLL TYPE THROTTLE HANDLE (STANDARD)



ROLL TYPE THROTTLE HANDLE (OPTION)



Pull out and set the stopper to position (2) to avoid accidental reversing operation.

Push back and release the stopper to position (1) for reversing operation.

SPECIFICATIONS

Recommended Air Pressure : 0.6MPa(85psi)

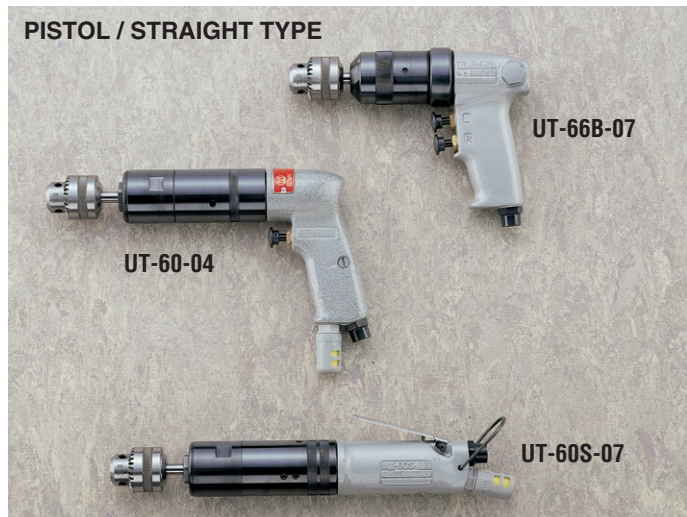
Model	Type	Drilling Capacity		Free Speed (about)	Overall Length (about)		Weight (about)		From Center to Outside (about)		Feed Length (about)		Air Hose Size		Average Air Consumption		Noise Level	Vibration Level
		mm	in		r.p.m.	mm	in	kg	lb	mm	in	mm	in	mm	in	m ³ /min		
URD-22RR	Self-Returning	22.0	7/8	600	442	17 13/32	5.8	12.8	39	1 17/32	70	2 3/4	12.7	1/2	1.3	46	95	3.0

Air Inlet Thread : N.P.T.3/8" for URD-22RR

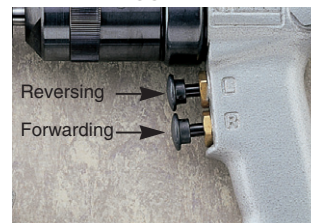
UT-60 & 66 SERIES TAPPERS

UT-60 series equipped with the "PUSH-PULL" auto-reversing clutch mechanism need no special operation for reversing. Push the tool forward against the work for tapping in, and just pull it backward for reversing out.

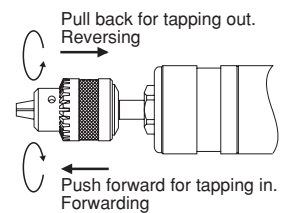
UT-66 series reversible drills have the double trigger handle for quick and frequent switchover of rotation.



Double-Trigger Handle



"Push-Pull" Auto reversing Clutches



Built-in Air Regulator

SPECIFICATIONS

Recommended Air Pressure : 0.6MPa(85psi)

Model	Tapping Capacity		Free Speed (about)	Overall Length (about)		Weight with Chuck (about)		From Center to Outside (about)		Average Air Consumption		Noise Level	Vibration Level
	mm	in		r.p.m.	mm	in	kg	lb	mm	in	m ³ /min		
UT-66B-15	6	1/4	1500	183	7 7/32	1.32	2.90	25.0	31/32	0.4	14.4	85	1.8
UT-66B-07	8	5/16	800	196	7 23/32	1.42	3.12	25.0	31/32	0.4	14.4	85	1.8
UT-60-07	8	5/16	680	244	9 39/64	1.80	3.96	22.5	57/64	0.5	18.0	75	2.0
UT-60-04	8	5/16	400	244	9 39/64	1.80	3.96	22.5	57/64	0.5	18.0	75	2.0
UT-60S-07	8	5/16	680	300	11 13/16	1.65	3.63	22.5	57/64	0.5	18.0	75	2.5
UT-60S-04	8	5/16	400	316	12 7/16	1.65	3.63	22.5	57/64	0.5	18.0	75	2.5

Air Inlet Thread : N.P.T.1/4" for UT-66B-15-UT-60S-04 Air Hose Size : 9.5mm (3/8") for UT-66B-15-UT-60S-04
Nominal Chuck Size : 8mm (5/16") for UT-66B-07-UT-60S-04